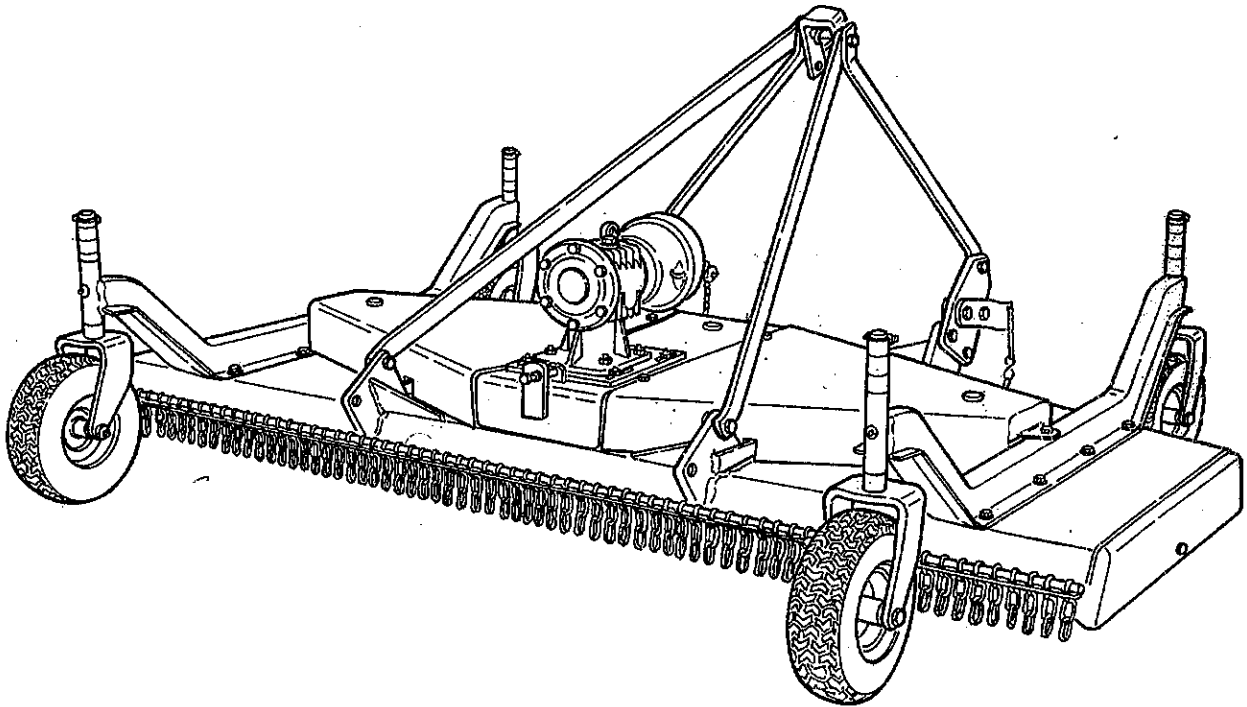


30 BEFCO BL

OLD

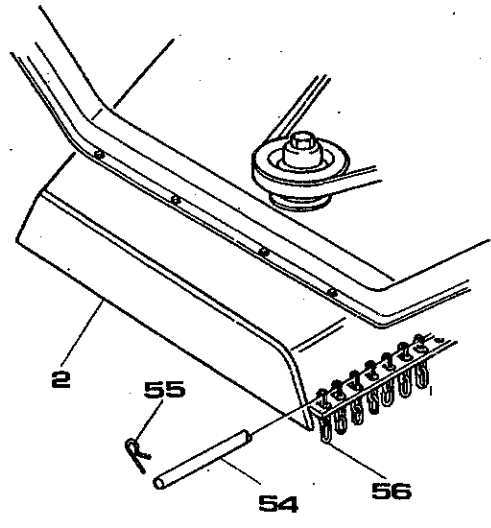
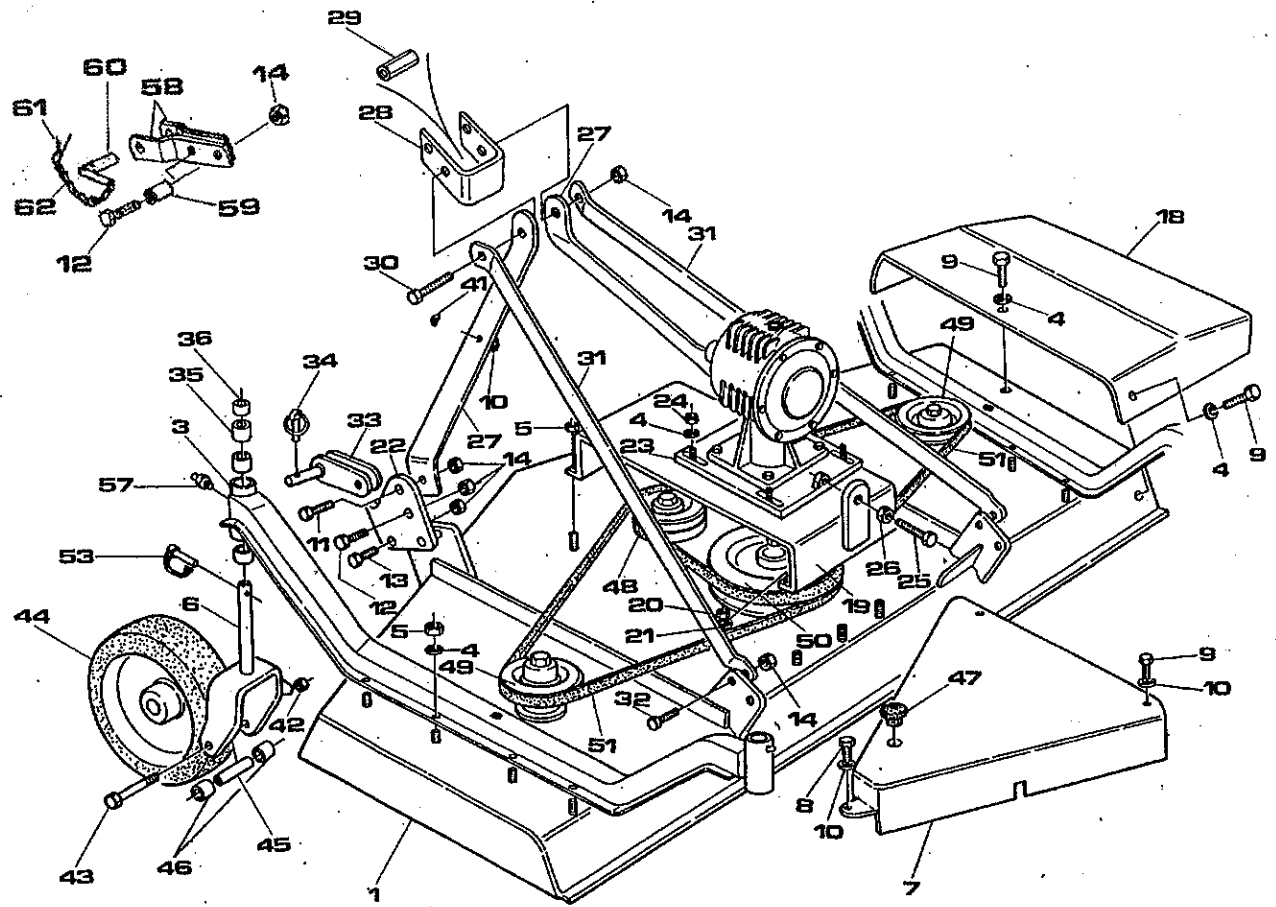
PARTS BREAKDOWN



CYCLONE Three Spindle Grooming Mower C50

C50
FRAME

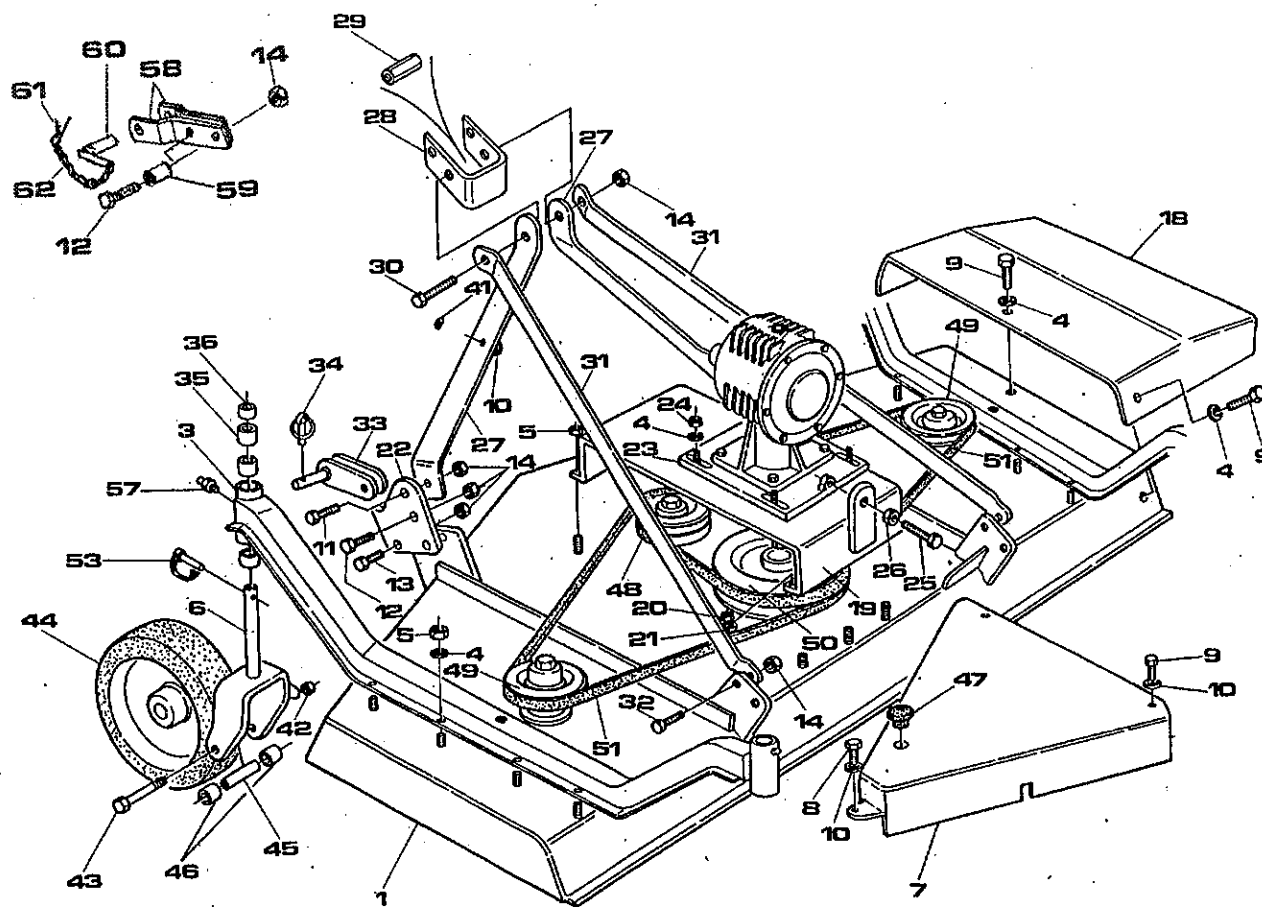
Eric



**C50
FRAME**

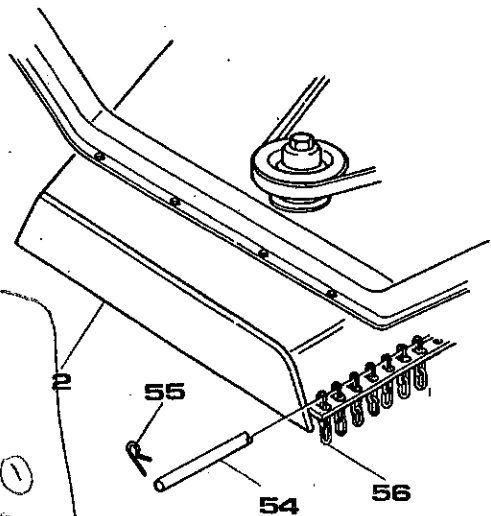
ITEM #	PART #	DESCRIPTION	QTY.
1	010 6910	Frame 4' Side Discharge	1
	020 6910	Frame 5' Side Discharge	1
	030 6910	Frame 6' Side Discharge	1
2	010 6900	Frame 4' Rear Discharge A, B, C	1
	010 6903	Frame 4' Rear Discharge D	1
	020 6900	Frame 5' Rear Discharge A, B, C	1
	020 6903	Frame 5' Rear Discharge D	1
	030 6900	Frame 6' Rear Discharge	1
	040 6900	Frame 7 Foot Rear Discharge	1
	3	010 6932	Wheel Arm 4' A, B, C
010 6939		Wheel Arm 4' D	2
020 6932		Wheel Arm 5' A, B, C	2
020 6939		Wheel Arm 5' D	2
030 6932		Wheel Arm 6' —	2
040 6932		Wheel Arm 7'	2
4		003 0157	Flat Washer 10 mm
5	003 0156	Nut 10 mm	21
6	000 6946	Wheel yoke 5" height adjustment ^{a/2}	4
	000 6971	Wheel yoke 4" height adjustment ^{b/2}	4
7	010 6975	Belt shield 4' A, B, C	2
	010 6987	Belt shield 4' D	2
	020 6975	Belt shield 5' A, B, C	2
	020 6987	Belt shield 4' D	2
	030 6975	Belt shield 6'	2
	040 6975	Belt shield 7'	2
	8	000 6349	Bolt 10 x 20
9	003 3176	Bolt 10 x 25	-
10	000 2034	Flat washer 10 mm	11
11	000 6578	Bolt 16 x 45	2
12	003 3218	Bolt 16 x 55	2
13	000 2365	Bolt 16 x 50	4
14	000 5581	Nut 16 mm	11
18	000 6781	Deflector 4'	1
	000 6521	Deflector 5'	1
	000 6831	Deflector 6'	1
	000 6904	Central plate 4'	1
19	000 6875	Central plate 5'	1
	000 6913	Central plate 6'	1
	000 6814	Central plate 7'	1
	000 1279	Nut 10 mm	3
20	000 1280	Lock washer 10 mm	3
22	000 6540	Lower Hitch Block Plate	2
	000 6854	Lower Hitch Block Plate RD7	2
23	000 6541	Gearbox Flange	1
24	001 4106	Nut 10 mm	4
25	000 6547	Bolt 12 x 100	1
26	000 1106	Nut 12 mm	2
27	000 6822	Top Hitch Support	2
	000 6823	Top Hitch Support RD7	2

C50
FRAME



* 000-6967A
 new air tire
 000-6967A
 inner bushing
 000-~~884170~~
 @.6584
 bearing
 000-6968
 retainer
 000-6969(2)

000-6923Y
 HARD TIRE
 5584
 000-~~884170~~
 -884270
 6585



**C50
FRAME**

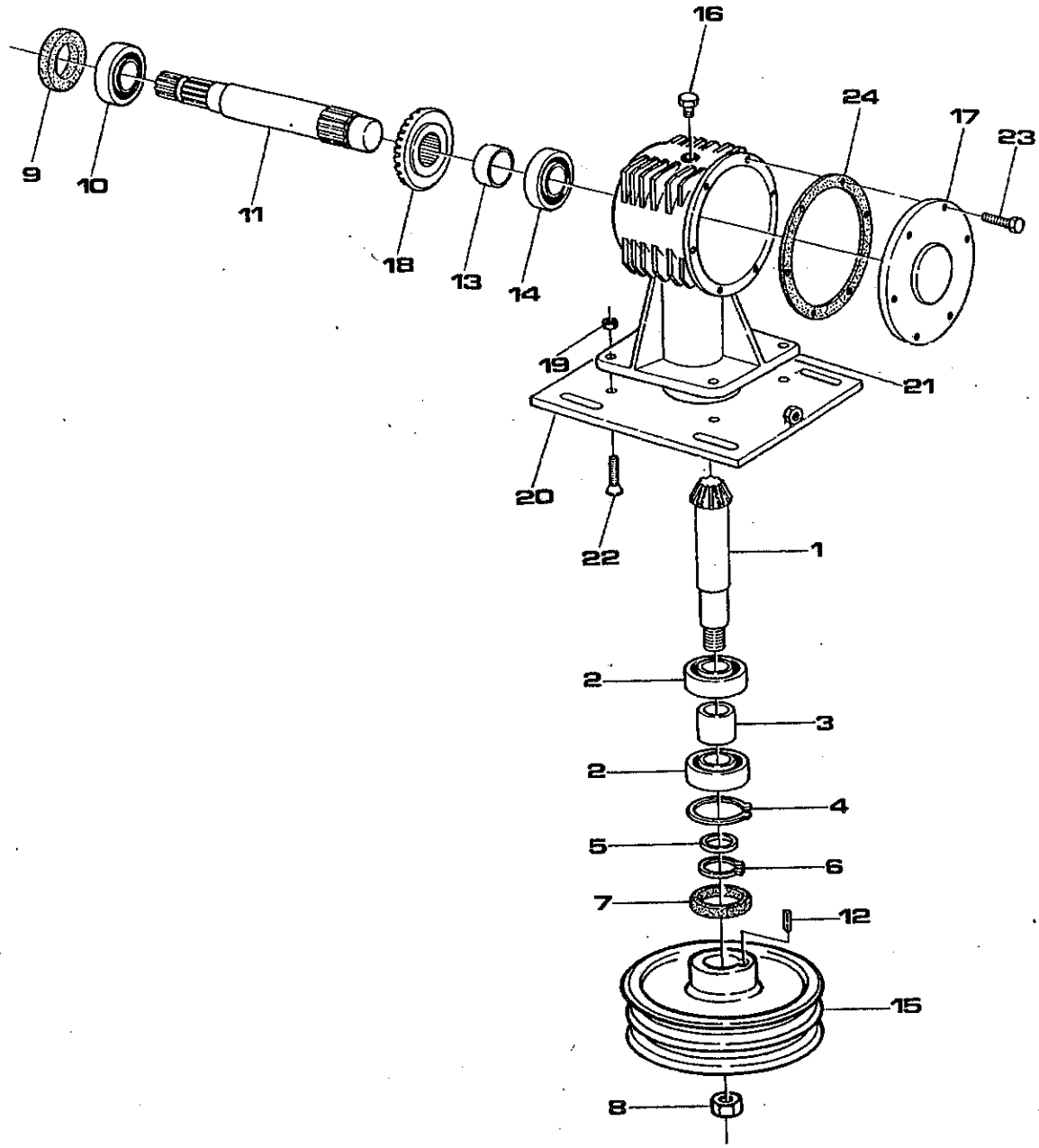
ITEM #	PART #	DESCRIPTION	QTY.
28	000 6828	Top Hitch Plate	1
29	008 5057	Spacer	1
30	000 6834	Bolt 16 x 150	1
31	010 6570	Top Hitch Arm 4'	2
	020 6570	Top Hitch Arm 5'	2
	030 6570	Top Hitch Arm 6'	2
	000 6821	Top Hitch Arm 7'	2
32	003 2687	Bolt 16 x 40	2
33	000 6573	Hitch Block	2
34	001 8266	Lynch Pin	2
35	000 6586	1" Spacer	-
36	000 6587	1/2" Spacer	-
42	003 0358	Nut 14 mm	-
43	000 6619	Bolt 14 x 150	4
44	000 6923Y	Hard Tire	4
	502 093B 1935	Air Tire on Versions A,B,C & D	4
	000 6967A	Air Tire on Version E	4
45	000 8841Y AIR TIRE	Inner Bushing	4
	000-6584	(Hard Tire, Air Tire on Version E)	4
	502 093B	Inner Bushing	4
		(Air Tire on Versions A,B,C & D)	4
46	000 8842Y	Outer Spacer (Hard Tire)	8
	502 196B	Flat Washer 20 mm (Pneumatic Tire)	8
47	000 6647	Plastic Cap	3
48	000 6791	Pulley 120 x 2 (4')	1
	000 6621	Pulley 130 x 2 (5')	1
	000 6841	Pulley 160 x 2 (6')	1
	000 6861	Pulley 190 x 2 (7')	1
49	000 6792	Pulley 120 x 1 (4')	2
	000 6622	Pulley 130 x 1 (5')	2
	000 6842	Pulley 160 x 1 (6')	2
	000 6862	Pulley 190 x 1 (7')	2
50	000 6692	Pulley 250 x 2	1
51	000 6798	Belt 5V630 (4')	2
	000 6693	Belt 5V710 (5')	2
	000 6848	Belt 5V850 (6')	2
	000 6694 94B	Belt 5V1000 (7')	2
53	000 6610	Lynch Pin	4
54	010 6762	Chain Rod (4')	1
	020 6762	Chain Rod (5')	1
	030 6762	Chain Rod (6')	1
	0406762	Chain Rod (7')	1
55	004 4156	Cotter Pin	1
56	000 6764	Chain	-
57	000 1065	Grease Fitting	4
58	000 6826	Lower Hitch Arm (7')	4
59	000 6827	Spacer (7')	4
60	003 8346	Hitch Pin (7')	2
61	003 2366	Cotter Pin (7')	2
62	000 8506	Chain	2

retainer bearing
000-6969

bearing
000-6968

DISCONTINUED

C50
GEAR BOX

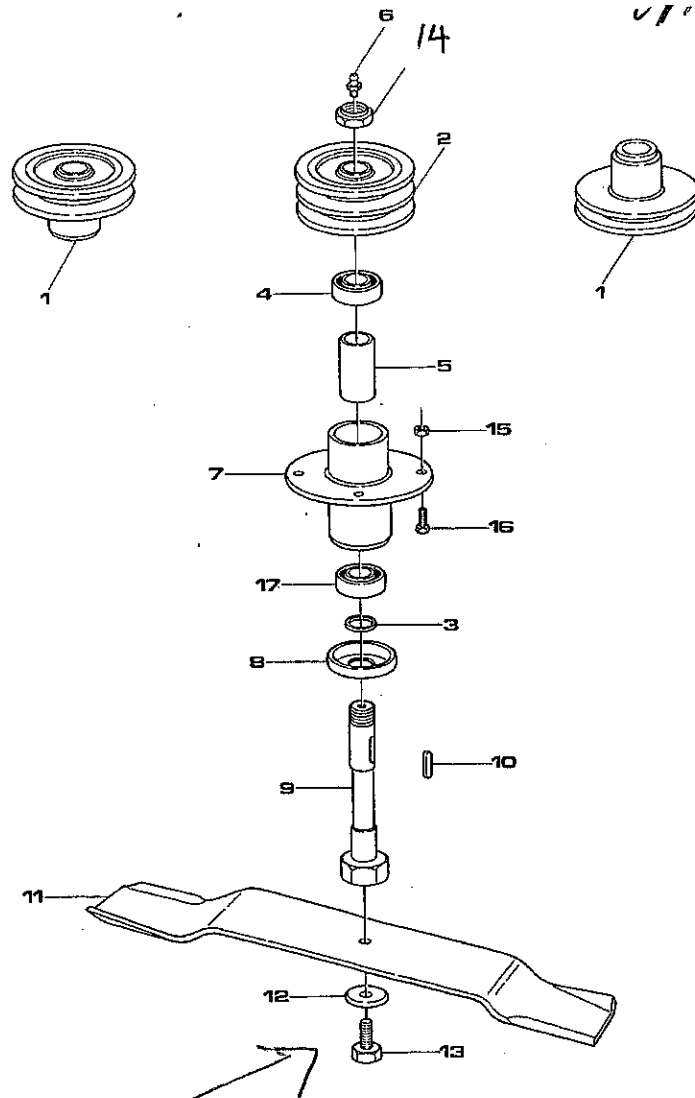


**C50
GEAR BOX**

ITEM #	PART #	DESCRIPTION	QTY.
1	000 6676A	Pinion Gear	1
2	001 2149	Bearing 6208	2
3	000 6687	Spacer	1
4	000 1154	Snap Ring D.80 Inner	1
5	000 6685	Spacer Washer	1
6	000 8138	Snap Ring D.40 Outer	1
7	000 6684	Oil Seal 40.80.10	1
8	000 6698	Nut 25 mm	1
9	000 2295	Oil Seal 35.62.10	1
+ 10	002 5332	Bearing 6207	1
11	000 6657	Input Shaft	1
12	000 6689	Key 7 x 8 x 30	1
13	000 6667	Rear Spacer	1
	000 6661	Rear Spacer (Model SD and Versions E)	1
+ 14	000 2292 >	Bearing 6305 OR 004-4217 NEW V(E)	1
	004 4217 >	Bearing 30305 (Model SD and Versions E)	1
15	000 6692	Pulley SPB 250 x 2	1
16	000 1107	Breather Cap	1
17	000 6656	Gearbox Cover	1
18	000 6677A	Ring Gear	1
19	003 0064	Nut 12 mm	4
20	000 6541	Gearbox Support Plate	1
21	000 6658	Gearbox Housing	1
22	004 6334	Bolt 12 x 45	4
23	000 6349	Bolt 10 x 20	6
24	003 0193	Gasket	-
	013 0193	Gasket	-

050-0642 gearbox

C50
ROTOR



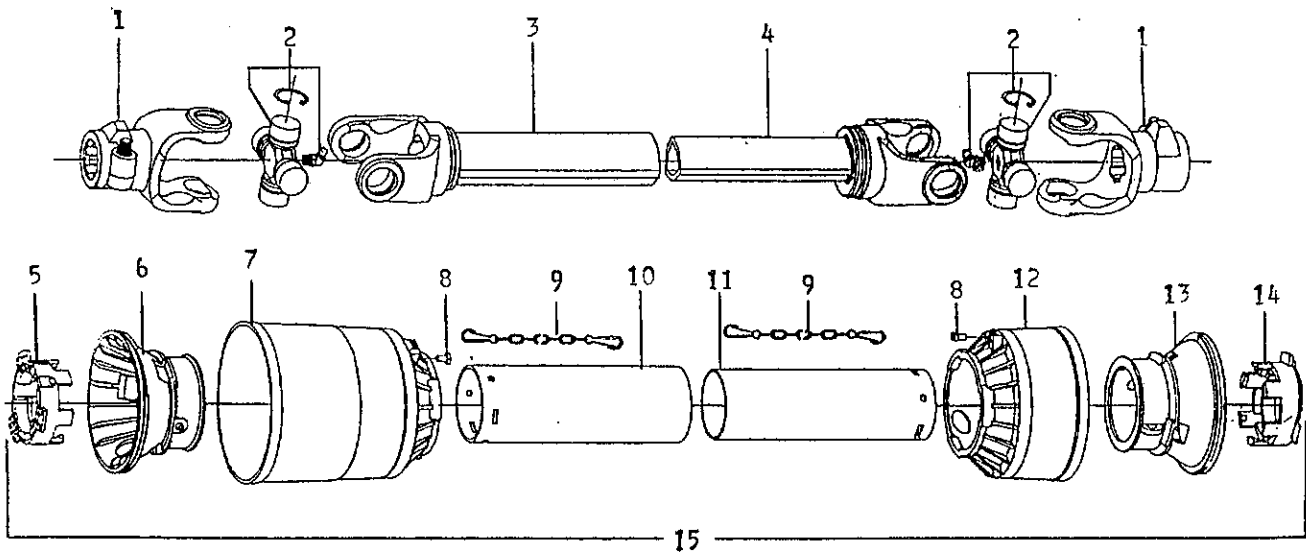
OLD STYLE HAS A WGT
000-6643

**C50
ROTOR**

ITEM #	PART #	DESCRIPTION	QTY.
1	000 6792	Pulley 120 x 1 (4')	2
	000 6622	Pulley 130 x 1 (5')	2
	000 6842	Pulley 160 x 1 (6')	2
	000 6862	Pulley 190 x 1 (7')	2
2	000 6791	Pulley 120 x 2 (4')	1
	000 6621	Pulley 130 x 2 (5')	1
	000 6841 *	Pulley 160 x 2 (6')	1
	000 6861	Pulley 190 x 2 (7')	1
3	000 6606	Spacer Washer	3
4	000 6634	Bearing 6205-Z	3
5	000 6640	Spacer	3
6	002 9036	Grease Fitting	3
7	000 6648	Rotor Support	3
8	000 6636	Cover	3
9	000 6649	Blade Holder Shaft <i>OLD STYLE</i>	3
10	000 6639	Key 7 x 8 x 25 <i>000-6638</i>	3
11	000 6795	Blade 4'	3
	000 6641	Blade 5'	3
	000 6845	Blade 6'	3
	000 6690	Blade 7'	3
12	000 8560	Spring Cup Washer	3
13	000 8559 6659	Blade Bolt	3
14	000 6698	Nut 25 mm	3
15	003 0156	Nut 10 mm	12
16	000 1008	Bolt 10 x 30	12
17	000 6626	Bearing 6205-ZZ	3
	<i>⇒</i> 000 6629 <i>BOLT</i>	Spindle Assy. Complete	-

* *OLD STYLE COMP. SPINDLE
000-6620
BLADES HELD ON WITH NUT*

C50
DRIVE SHAFT — EUROCARDAN



C50

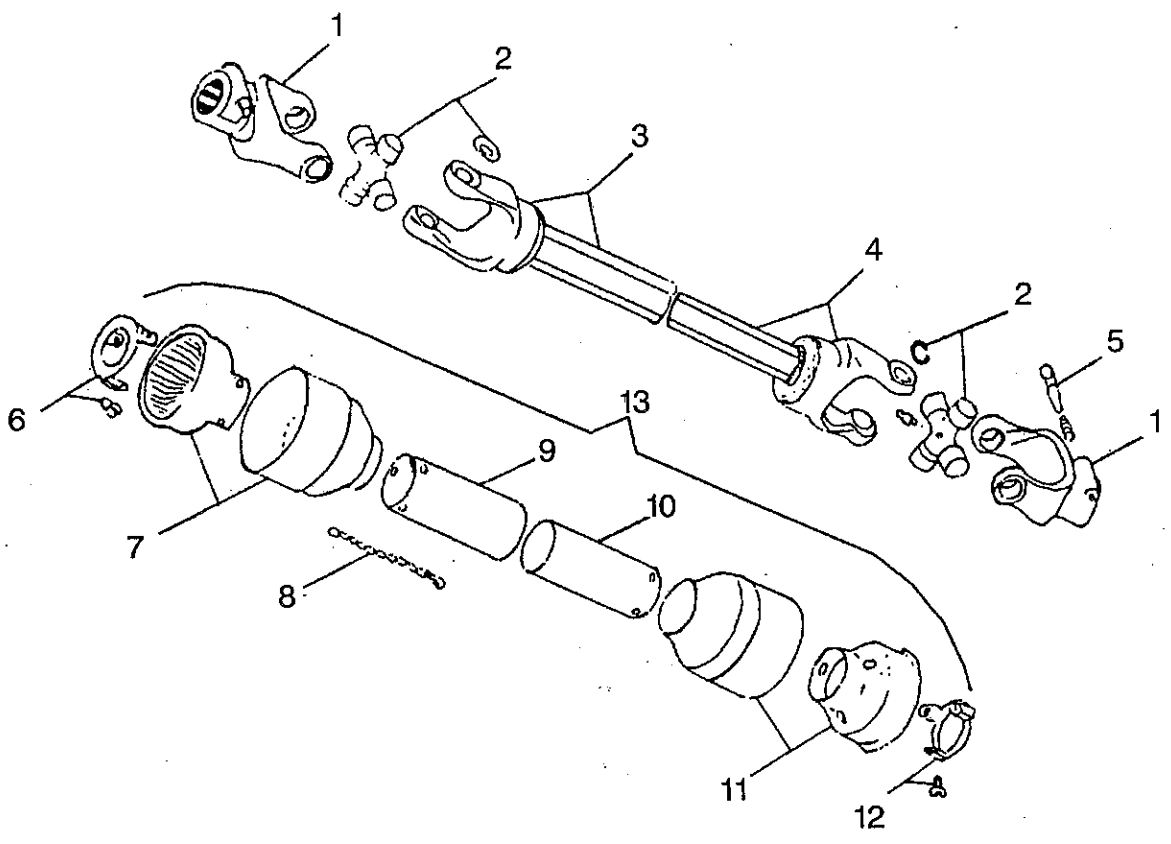
DRIVE SHAFT — EUROCARDAN

ITEM #	PART #	DESCRIPTION	QTY.
1	023 001E	Yoke 1 3/8-6	2
2	013 130E	Cross & Bearing	2
3	194 3045	Outer Tube and Yoke 4' Mower	1
	194 3055	Outer Tube and Yoke 5' Mower	1
	194 3070	Outer Tube and Yoke 6' Mower	1
4	195 3047	Inside Tube & Yoke 4' Mower	1
	195 3057	Inside Tube & Yoke 5' Mower	1
	195 3072	Inside Tube & Yoke 6' & 7' Mower	1
5	178 4210	Tube Bearing Outer	1
6	178 4201	Outer Tube Rigid Cone	1
7	178 4205	Soft Cone	1
8	178 4212	Pin for Stop Rotation	2
9	016 025E	Chain	2
10	177 3043	Outer Shield 4' Mower	1
	177 3053	Outer Shield 5' Mower	1
	177 3068	Outer Shield 6' & 7' Mower	1
11	187 2043	Inner Shield 4' Mower	1
	187 2053	Inner Shield 5' Mower	1
	187 2068	Inner Shield 6' & 7' Mower	1
12	178 4203	Soft Cone	1
13	178 4202	Inner Tube Rigid Cone	1
14	178 4211	Tube Bearing	1
15	944 3443	Shield Complete 4' Mower	1
	944 3453	Shield Complete 5' Mower	1
	944 3468	Shield Complete 6' & 7' Mower	1
	050 0413	PTO Complete 4' Mower	1
	050 0414	PTO Complete 5' Mower	1
	050 0415	PTO Complete 6' 6 Mower	1

050 0416 PTO Complete 7'

C50
DRIVE SHAFT — EG

Danny



**C50
DRIVE SHAFT — EG**

ITEM #	PART #	DESCRIPTION	QTY.
1	024 001E	Push Pin Yoke	2
2	014 130E	Cross & Bearing	2
3	241 047E	Outer Tube Yoke 4'	1
	241 048E	Outer Tube Yoke 5'	1
	241 035E	Outer Tube Yoke 6' & 7'	1
4	240 940E	Inner Tube Yoke 4'	1
	240 943E	Inner Tube Yoke 5'	1
	240 931E	Inner Tube Yoke 6' & 7'	1
5	026 004E	Push Pin Set	2
6	013 012E	Locking Collar Outer	1
7	013 016E	Guard Cone Outer	1
8	016 025E	Chain	2
9	141 179E	Outer Shield	1
10	141 275E	Inner Shield	1
11	013 028E	Guard Cone Inner	1
12	013 011E	Locking Collar Inner	1
13	240 225E	Shield Complete	1
	948 404B	PTO Comp. T40 850 mm, 4'	-
	948 405B	PTO Comp. T40 900 mm, 5'	-
	948 406B	PTO Comp. T40 1050 mm, 6' & 7'	-

old model

91 11/29 11:11

919 977 9718

BEFCO 01

Handwritten signature

**PARTS
ILLUSTRATION
MODEL NO.**

THREE SPINDLE MOWER

ROTOR & BLADE

17-048-711

17-060-711

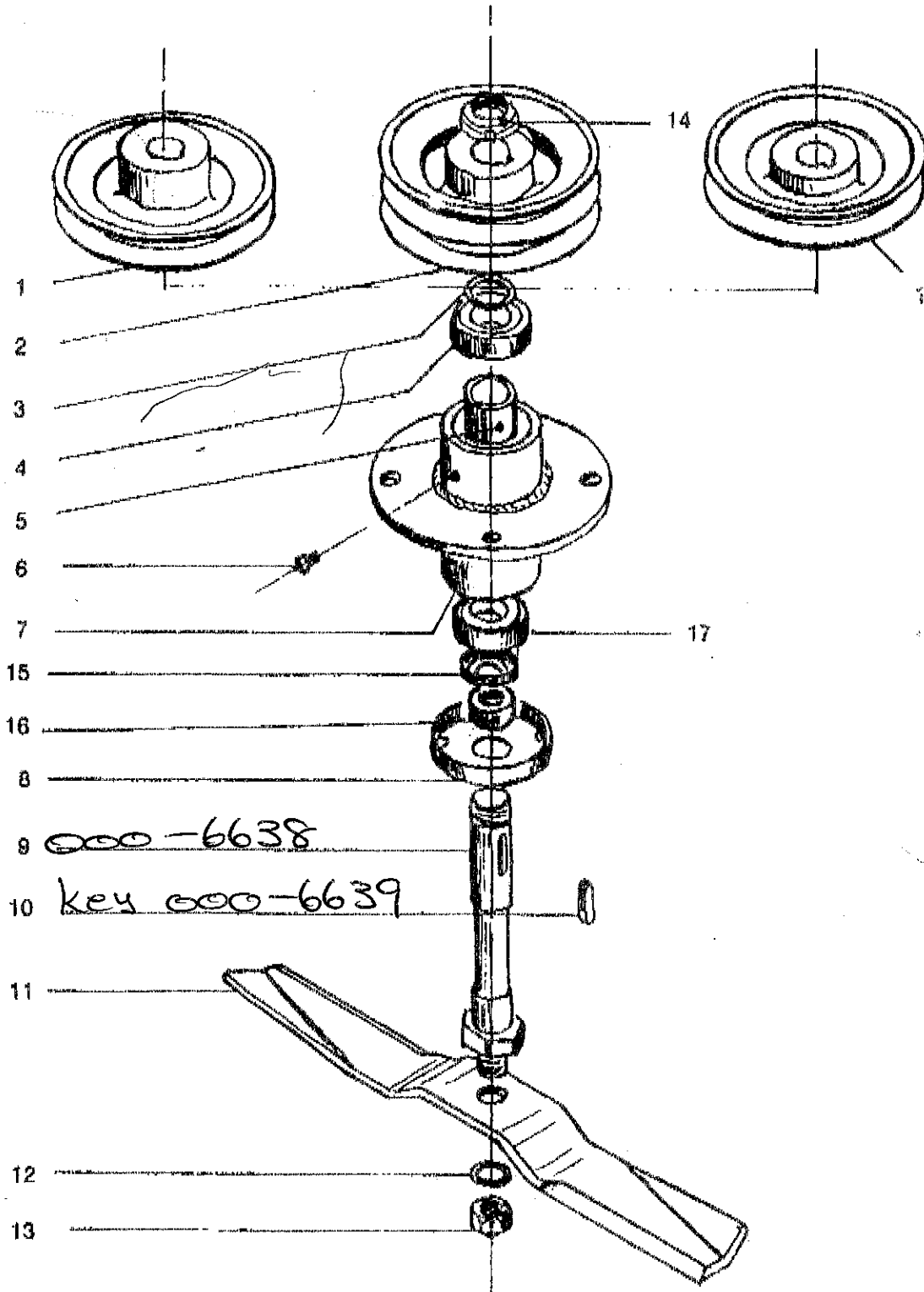
17-072-711

GR 17

SR1

CA 1

***CA1 30**



- 1
- 2
- 3
- 4
- 5
- 6
- 7
- 15
- 16
- 8
- 9
- 10
- 11
- 12
- 13

14

17

old Model

'91 11/29 11:11

Z 919 977 9718

BEFCO

01

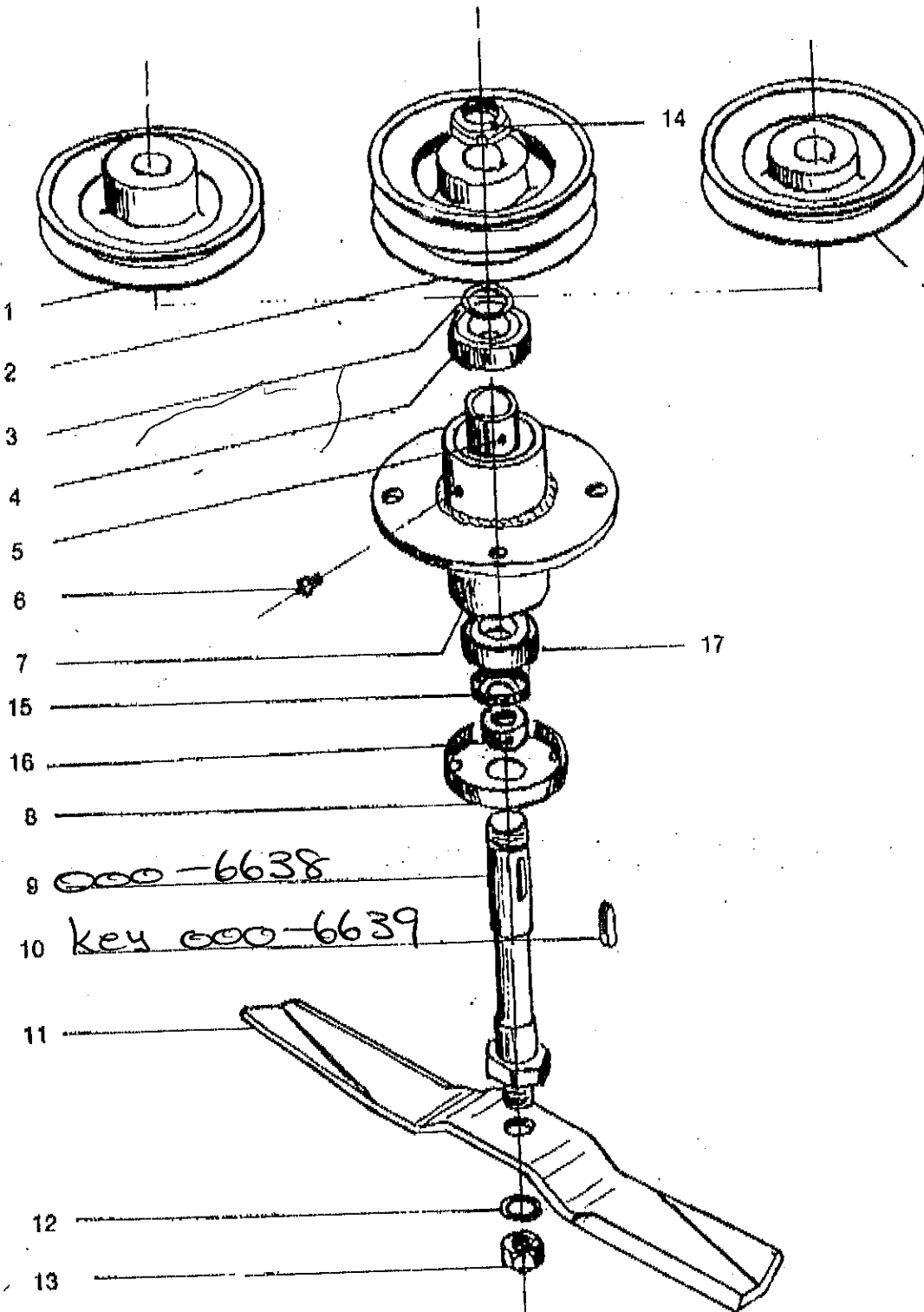
- Andrew

PARTS
ILLUSTRATION
MODEL NO.

THREE SPINDLE MOWER,
ROTOR & BLADE

17-048-711
17-060-711
17-072-711

GR 17
SR1
CA 0
*CA1.40





PARTS LIST
MODEL NO.

THREE SPINDLE MOWER
ROTOR & BLADE
17-048-711
17-060-711
17-072-711

GR 17
SR1
CAT. 90
***CAT. 40**

ITEM	PART #	DESCRIPTION	NO.
1	000 6792	PULLEY SPB 120X1	2
	000 6822	PULLEY SPB 130X1	2
	000 6842	PULLEY SPB 160X1	2
2	000 6791	PULLEY SPB 120X2	1
	000 6621	PULLEY SPB 130X2	1
	000 6841	PULLEY SPB 160X2	1
3	000 6606	SPACER	3
4	000 6626	BEARING 6205-2RS	3
5	000 6628	SPACER	3
6	000 6635	GREASE FITTING M6	3
7	000 6631	SUPPORT, SHAFT	3
8	000 6636	COVER	3
9	000 6638	SHAFT, BLADE HOLDER	3
10	000 6639	KEY M8X7X25	3
11	*000 6795	BLADE MOD. 48	3
	*000 6641	BLADE MOD. 60	3
	*000 6845	BLADE MOD. 72	3
12	000 6642	WASHER M19	3
13	000 6643	NUT, SELF-LOCKING M18	3
14	000 6623 <i>6698</i>	SAFETY NUT M25	3
15	001 3705	SEAL-OIL 35.52.10	3
16	000 6630	SPACER	3
17	000 6627	BEARING 6205	3